



COLIN LEE & JENKS  
opticians

# Care Plan



ENJOY COMPLETE AND TOTAL PEACE OF MIND WITH **VeyeP**

# Your Personal **VeyeP** Care Plan Includes

## **Eye Examinations**

Enhanced eye examinations as often as required using latest technology, including Optical Coherence Tomography OCT. Offering a complete ocular health check and early detection for better protection against glaucoma, macular degeneration and other eye health conditions.

## **Appointments**

Unlimited appointments with priority booking. Not limited to fixed NHS prescribed intervals. Unlimited review appointments when monitoring is required.

## **Emergency Appointments**

Priority appointments for any eye concerns, emergencies, or advice. Including CUES Community Urgent Eye Care Services.

## **Special Events**

Be the first to hear of any special offers, events and new collections.

## **Discounts**

20% discount on all purchases of complete spectacles and sunglasses.  
30% discount on additional complete spectacles and sunglasses purchased within 3 months of your initial pair.  
10% discount on lenses glazed into your own frame. All optical accessories and eye drops.

## **Accidental Breakage Cover**

Accidental breakage cover for spectacles 50% off standard retail price within first year of original purchase.

## **Aftercare**

Unlimited free MOT and deep clean of spectacles along with free cleaning sprays, cloths and cases.

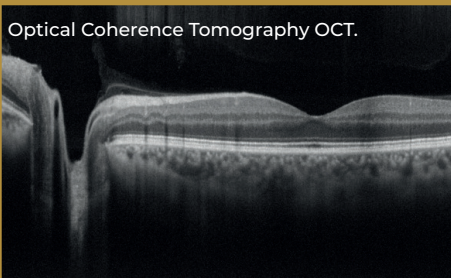
## **Family Packages**

Family membership options available, including 2 adults and 3 children under 19 living at the same address.

## **Contact Lenses**

**VeyeP** contact lens plan options available.

Optical Coherence Tomography OCT.



# Your VeyeP Care Plans



Ideal for spectacle wearers who understand and appreciate the importance and value of top quality eyecare and want to get generous discounts on spectacles and sunglasses, eyedrops and accessories.



Designed for families, with just one person from the household joining the plan. Benefits are extended for all the members of the same family who live at the same address. (Children under 16, under 19 if in FTE, to receive NHS eye tests and NHS spectacle vouchers).



This includes access to all of our eye examinations including contact lens consultations and offers generous discounts on all of our product range – spectacles, sunglasses, contact lenses, solutions and accessories.

ENJOY COMPLETE AND TOTAL PEACE OF MIND WITH VeyeP

# VeyeP Care Plan Comparison



YOUR PLAN	<input type="checkbox"/>	<input type="checkbox"/>	<input type="checkbox"/>
WHAT IS COVERED?	All sight/eye consultations	All sight/eye consultations	All sight/eye and contact lens consultations
ADVANCED OCT EYE TEST	YES	YES	YES
PRESCRIPTION SPECTACLES AND SUNSPECS DISCOUNT	20%*	20%*	20%*
LENSES GLAZED TO OWN FRAME DISCOUNT	10%	10%	10%
SUNSPECS (NON PRESCRIPTION), ACCESSORIES AND EYE DROPS DISCOUNT	10%	10%	10%
CONTACT LENS DISCOUNT	N/A	N/A	YES
ACCIDENTAL BREAKAGE COVER DISCOUNT	50%	50%	50%
WHO WOULD BENEFIT FROM THIS PLAN?	Everyone	Adults with children and dependants including partners (max 2 adults and 3 children under 19)	All contact lens wearers

\*30% off additional pairs purchased within 3 months of initial purchase.



### **I don't wear glasses- is it worth joining?**

Yes by joining the **VeyeP** Care Plan you will be entitled to our enhanced eye examination and all emergency appointments as often as needed.

### **I am entitled to an NHS exam every two years- is it worth joining?**

By joining the scheme, you will have access to our Enhanced Eye Examination for free as often as is needed, not restrained by NHS frequency regulations and you will also be entitled to discounts on products. (If you are entitled to an NHS spectacle voucher, joining **VeyeP** would exclude you from this entitlement).

### **I only visit the practice every 2 years- is it worth my while joining?**

Absolutely – if you join the scheme you can come more frequently with no extra charge. For example if you have eye health or visual concerns or fancy a new pair of specs, you can make an appointment to see us without charge. You also receive 20% discount off all prescription spectacles and sunglasses and 10% discount off all sunspecs (non prescription), accessories and eye drops.



### **Do you offer Family Membership?**

Yes absolutely.

By upgrading to the **VeyeP** Family.

- The **VeyeP** Family Care Plan covers two adults at the same address plus three children under 19 living at the same address only.
- Children under 16 or under 19 if in FTE continue to receive NHS eyetests and NHS spectacle vouchers and benefit from **VeyeP** discounts when buying spectacles, sunglasses and accessories

### **Can my partner join the Plan?**

Yes. By joining the **VeyeP** Family Care Plan, they too will be entitled to our Enhanced Eye Examination and all emergency appointments as often as is needed with all the product discounts. You will be entitled to the same benefits of the **VeyeP** individual plan. Alternatively, they may wish to join the **VeyeP** Care Plan separately.

### **I want to wear contact lenses- which plan is best for me to join?**

For contact lens wearers, the option is our **VeyeP** Contacts Plan which covers ALL your eyecare, including contact lens aftercare appointments, plus generous discounts on contact lenses, cleaning products and accessories.

If you are a contact lens wearer, you will need your own Care Plan (including children under 19 living at the same address). This is applicable to both the standard and the family plan.

- Free contact lens consultation, fitting and upgrade
- Follow-up contact lens aftercare
- Exclusive contact lens prices.



## COLIN LEE OPTICIANS

---

### Aldridge

t. 01922 454151 / 457055

---

### Burntwood

t. 01543 674687

---

### Great Barr

t. 0121 357 7890

---

### Lichfield

t. 01543 254645

---

### Rugeley

t. 01889 570544 / 577492

---

### Ward End

t. 0121 784 5888

---

[colinlee-opticians.co.uk](http://colinlee-opticians.co.uk)

## JENKS OPTICIANS

---

### Tamworth

t. 01827 62792

---

[jenks-opticians.co.uk](http://jenks-opticians.co.uk)



COLIN LEE  
& JENKS  
opticians

